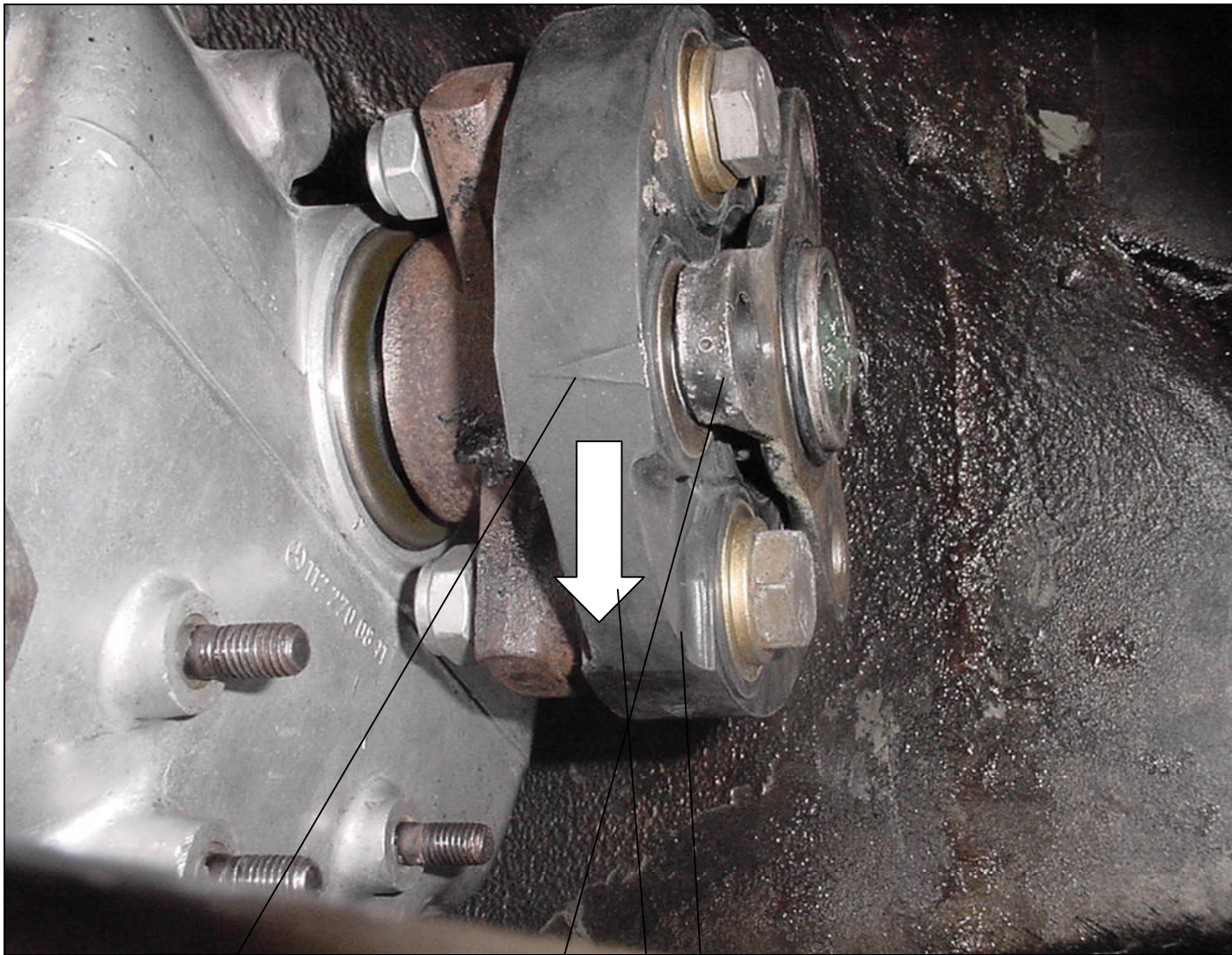




Critical please read this. Mercedes' has not properly documented the installation of the 300sel 6.3 flex disk. The disk must be mounted as shown. The arrow facing the front of the car on the flex disk. The raised area of the flex disk (thicker section between the fingers must be mounted as shown to insure that the 3 links are in tension when the car is move forward). The drive shaft will rotate counterclockwise (as view from the backside

of the transmission) as the car moves forward and the links will compress between the fingers. If the links are between the thinner sections of the flex disk they will distort very easily. Note: there are 2 different length bolts when installing the flex disk. Make sure you measure them correctly when installing. Torque the flex disk bolts to 35 ft lbs or 4.5 kpm



Arrow must face forward

Drive shaft centering flange shown w/o drive shaft

Note: gap in thin section

Arrow show direction of rotation when car is moving forward